



View Sheet - Multi-sheet drawing viewer

View Sheet allows you to view a drawing .dwg and browse the multi-sheet drawing created with one of the Electro Graphics CAD products: CADelet, iDEA or Eplus. It also provides some basic commands to edit the drawing and publish it as PDF files. View Sheet is ideal for viewing and printing sheets, for the workshop, the test room, for commissioning and maintenance; you can distribute it to your customers.

Installing View Sheet

View Sheet is always included in the Electro Graphics electrical CAD installation: CADelet, iDEA or Eplus.

View Sheet is a free application: you can download the installation package, in the 64bit or 32bit version for Windows, on page:

<https://www.electrographics.it/en/viewsheet>

Running View Sheet

If CADelet, iDEA or Eplus is installed, View Sheet can be launched from the ribbon of the CAD, in order to obtain a quick preview of the sheets in the open multi-sheet diagram.



To run View Sheet from CAD

From the bar Project > Modules, select ViewSheet.

Or, you can run View Sheet as a stand-alone application, from the Utility module.

To run View Sheet from Utility



From the Windows Application menu click Electro Graphics Series 20xx > Utility > View Sheet.

If you have installed View Sheet as a stand-alone package, you can launch it from the Windows Application menu.

To run View Sheet



From the Windows Application menu click Electro Graphics Series 20xx > View Sheet.

View Sheet can also be run from Windows Explorer, so you can browse a wiring diagram without open it in the CAD.

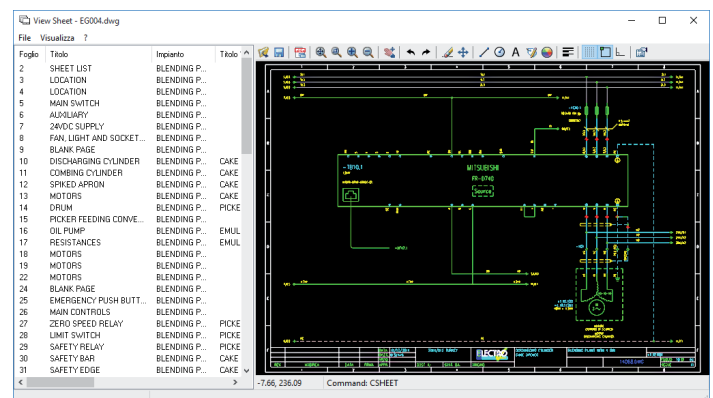
How to run View Sheet from Windows Explorer

Select the desired drawing file, press the right mouse button and select View Sheet from the cursor menu.

Note. In order to run View Sheet from Windows Explorer, you must previously start it from the CAD Electro Graphics or the Windows application menu at least once.

Using View Sheet

When you run View Sheet in the main window you can browse the contents of the drawing file.



In the box on the left (sheet list), you can see the list of sheets in the drawing: for each sheet you can see the initials, the title read from the cartouche and all other information related to the attributes included in the title block. You can customize which columns to display and order by selecting Column Setup from the View menu.

Selecting a sheet in the list, it will be displayed in the main pane of the View Sheet window.

All commands available in View Sheet can be found in the toolbar located above the drawing area.

Open

Open a drawing in dwg format (AutoCAD).



Save

Save changes to the drawing. The drawing is saved as dwg format AutoCAD 2004.



Save as PDF

Saves the diagram drawing in PDF format. The dialog box lets you enter the name of the PDF file and choose some preferences such as to print only the selected sheets, create a monochrome black and white PDF, display the object's line thicknesses, adjust the spacing at the edges of the sheet, hide in the PDF the hidden lines in the drawing in presence of solid objects or covering entities, create a PDF file in PDF/A format



useful for the long-term preservation of the document, open the PDF file after saving.

Zoom and pan



The zoom controls allow you to increase or decrease the scale factor for displaying the drawing. The following commands are available as in CAD: Zoom extensions, Zoom window, Zoom in, Zoom out.

The Pan real time command allows you to move the current view by selecting a base point and dragging the view by holding down the right mouse button, or by holding down the mouse wheel.

Selecting objects in the drawing

Click on it to select an object. To select one or more objects using the selection window, click to select the first vertex of the window and a second time to select the second vertex. If the selection window is constructed from left to right, only the objects completely contained in it are selected. If the selection window is constructed from right to left, the objects partially contained in it are also selected.

The grip points are activated for the selected objects. By clicking on a grip you can change the position of an object such as attribute blocks, attributes, texts, etc. or modify the shape of an object such as a line, a circle, etc. To cancel the selection, press the ESC key.

Executing commands that require the selection of points in the drawing, it may be useful to activate the snap and orthogonal operating modes.

Snap mode



Binds selection of points on video at specified intervals. You can enable and disable the Snap mode using the button in the toolbar or the F9 key.

Object snap



Object snaps allow you to specify precise locations on objects when a point is requested during the execution of a command. When the cursor is close to a snap point, it is "captured" and the position is constrained. Object snaps allow the selection of end-of-line points along the lines and the center of circles or arcs. You can enable and disable the object snap using the button in the toolbar or the F3 key.

Orthogonal mode



Orthogonal mode limits the movement of the cursor to horizontal and vertical directions. You can enable and disable the ortho mode via the button in the toolbar or the F8 key.

Editing drawing

The edit commands provide the basic tools for editing the open drawing in the View Sheet. When executing a command, any request for user operations is notified via messages in the status bar below the drawing area. To cancel a command before its conclusion, press the ESC key.

Delete



Select the objects to be deleted in the drawing using the selection window and press the Delete button or the DELETE key.

Move



Select the objects to move in the drawing using the selection window and press the Move button. Then, the command requests the selection of a first base point for the movement and a second destination point.

Line



Draw a line. The command requests the selection of the start and end points of the line. After drawing a line, the command continues by requesting a further point for the drawing of a new line having as starting point the final one of the line just drawn. To stop the command, press the ESC key.

Circle



Lets you draw a circle. The command requires a first point that corresponds to the center of the circle and a second point to set the radius.

Text



Insert text in the current sheet. You can customize Text Height, Width Factor, Horizontal and Vertical Justification and Color. To edit a text after insertion select it in the drawing and start the Text command or double-click on the selected text.

Edit attributes



Change the value of the attributes of a block in the drawing. By selecting multiple blocks, you can edit the common attributes. This command is enabled only if CADelet, Eplus or iDEA is also installed.

Change color



Allows you to change the color of the selected objects in the active sheet.

Undo and Redo



These two commands allow you to cancel the last modification made to the drawing or redo the one just canceled.

Show hide line thicknesses



Allows you to show or hide the thickness of the lines of the objects in the drawing.

Property



In the Properties window it is possible to manage the AutoCAD characters (*.shx), the Windows True Type fonts and the background color for the display of the drawings.