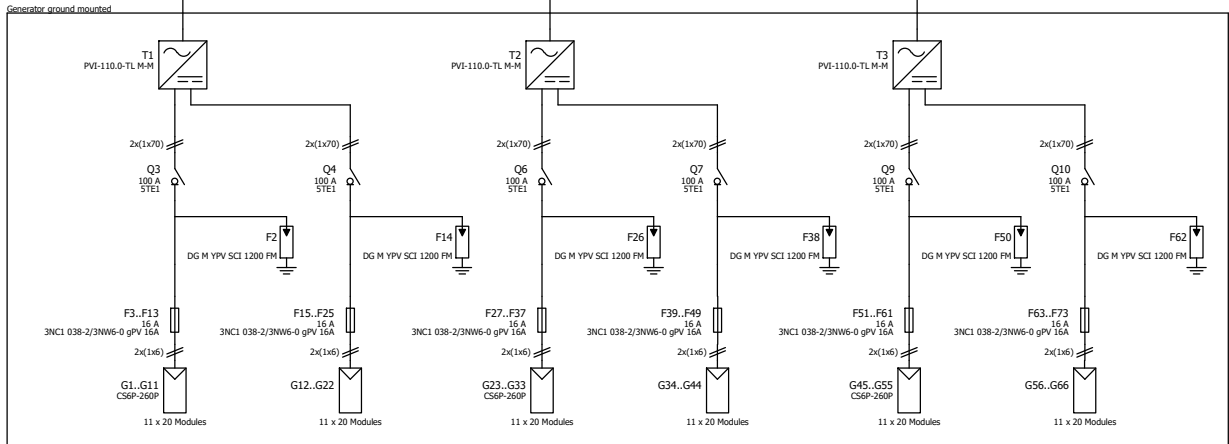
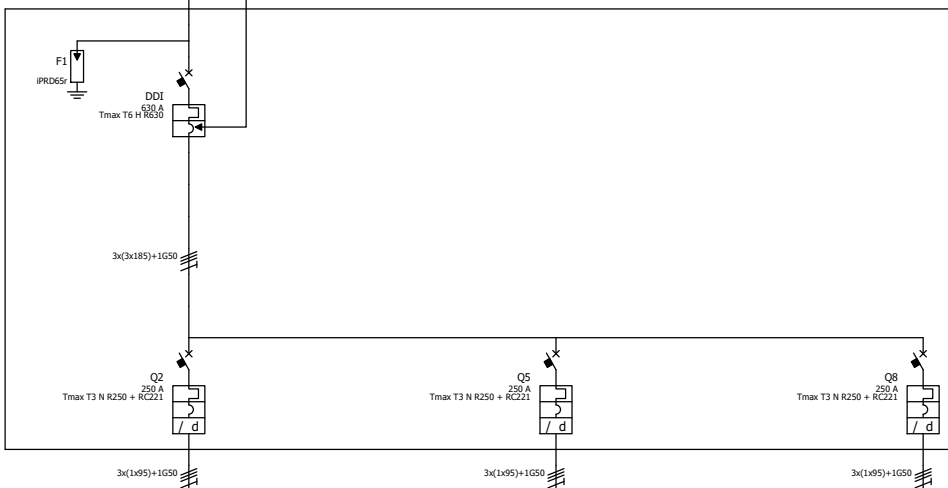


Symbols legend	
	Inverter
	Photovoltaic field
	Magneto-thermal
	Fuse
	Magnetothermal-Differential
	Switch-disconnector
	Switch
	Discharger



DG: General device
DDI: Interface device

Working configurations
 Configuration 1 - General and interface devices closed.
 The loads of the plant are powered by the net or by the photovoltaic generator
 Configuration 2 - General device closed and interface device open.
 The loads of the plant are powered by the net only (Anomalous event on the generator or no power production)
 Configuration 3 - General and interface devices open.
 The loads of the plant are not powered (no power supply on the net)

Plant single-line diagram	
Firm	Sun Power Ltd
Responsible	Joe Black
Customer	SolarLands
Rated power	343.2 KW
Date	10/25/2017