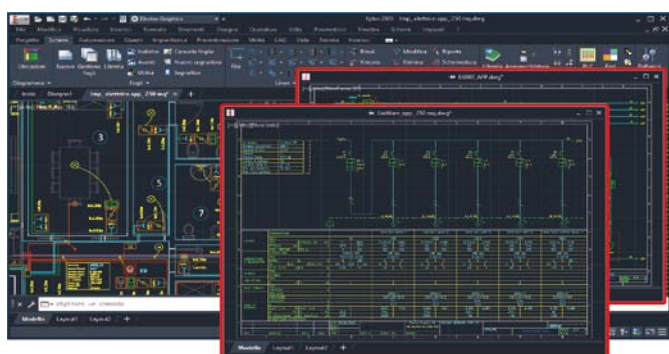


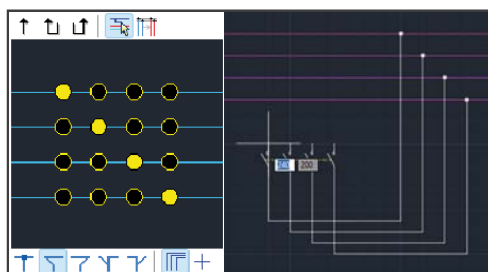
### Software for electrical and photovoltaic engineering

#### CADelet, iDEA, Eplus - Electrical CAD

- CADelet supports AutoCAD 2023.
- New Autodesk OEM 2023 CAD engine for Eplus and iDEA.

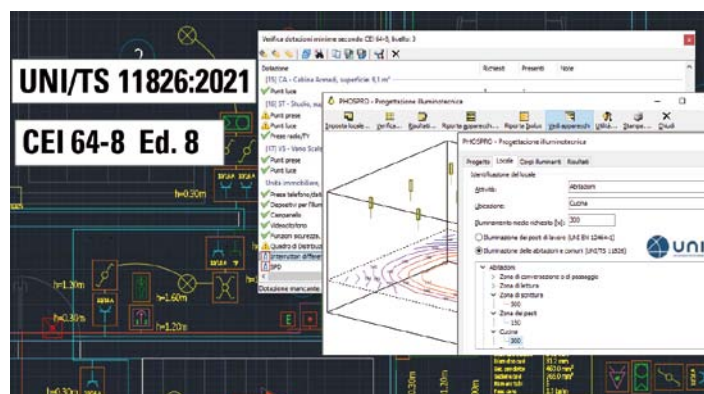


- Assignment of the preferred manufacturers used in the job order, with a specific filter in all database access operations.
- Dynamic automatic tracking of connections upon symbol insertion, with assignment of wire characteristics.
- Automatic recognition of the phases when inserting symbols on a multi-line diagram.
- Interactive management of location and function in diagrams, with recognition of functional zones or perimeter locations.
- Import of annotations from PDF diagrams (manual sketches, texts, geometries) onto the project.
- Generation of the table with the history of the annotations added to the schema.
- Management of cross-references between any symbolic elements of the diagram also reported on the PDF representation of the diagram.
- New features on modular connectors, with the possibility of connections on the frame.
- Automatic connection on pre-wired cable scheme.
- PLC: further profiles for the automatic assign-



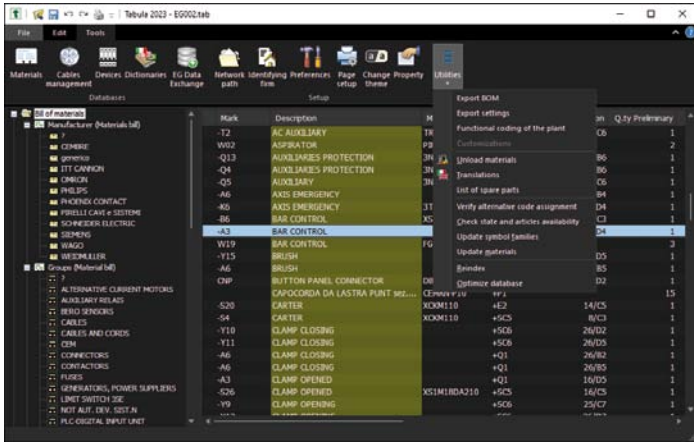
ment of operand numbering.

- PLC: identification and representation of the connectors integrated in the boards.
- PLC: updating and exchange of archives on .egz files using EG Data Exchange.
- Additional customizable data managed in schema reviews.
- Reporting of information taken from user drawings on the elements of the synoptic diagram.
- Export to .xls file of summary tables generated on schema.
- Types of protections to be applied to utilities in CAD now aligned with Ampère.
- Generation of single-line diagrams from the Ampère project with identification and management of elements in the field.
- New ways of sorting the tables designed by network management.
- Extension of the calculation of illuminances for domestic environments, now according to UNI 11826.
- Updating of the typical plant equipment according to the classification of the new CEI 64-8 VIII ed.



#### Cablo - Wiring harnesses

- New interface with use of ribbon bar in Cablo.
- Different interface styles in Cablo with possibility of dark theme.
- Support for HiDPI and 4K multi-monitor systems.
- New ways of automatic cable marking with customizable profiles.



## Tabula - Bil of materials

- Different interface styles in Tabula with possibility of dark theme.
- Support for HiDPI and 4K multi-monitor systems.
- Filter on preferred constructors in all database access operations.

## Ampère line - Electrical grid calculation

- Arc Flash analysis of switchboards according to IEEE 1584-2018 standard and generation of report and signaling label to be affixed to the switchboard.
- Setting of protections with AFDD arc flash mitigation device as an auxiliary element.



- Tabular multiple editing of units, with rapid addition of typical units.
- Multiple search and replacement of cables and protections.
- New management of the combined type protections with the possibility of coupling releases with a different manufacturer from the circuit-breaker.
- Possibility of setting both positive and negative adjustment tolerances.
- Drafting of typical protection reports and collation of the data sheet in the project documentation.
- Drafting and printing of the cable summary, multi-core or single-core, by single type.

- Automatic filtration of backup protections, at several definable levels.
- Identification of elements in the field and resulting single-line diagrams.
- Vector analysis of fault current flows, symmetrical, homopolar and two-phase ground.
- Analysis of the fault currents passing through a point following a fault in another set point.
- Analysis of the fault with 67 phase directional protections, in order to determine direction, characteristic angle and tripping logic.
- Check selectivity for fixed fault point with transformers in-rush in parallel.
- Setting of logic selectivity condition between protections.
- ELink - Update to Revit 2022 / 2023
- ELink - Optimized management of further parameters and recognition of typical electrical quantities.
- ELink - Recognition of non-electrical connection elements such as manholes or similar, for the purpose of routing users.
- Assignment of preferential constructors and specific filter in all database access operations.
- Extension and updating of the device database.

## Solergo - Photovoltaic engineering

- Introduction of 3D obstacles according to typical representation models for plants or antennas.
- Editing of the elements (roofs and obstacles) on the 3D model with action on their grips.
- Export of monthly and daily energy and producibility data to .xls file.
- Generation of the single connection document.
- Filter on preferred constructors in all archive access operations.
- Extension and updating of the PV modules and inverter databases.
- Dark themed styles and HiDPI and 4K monitor support.

